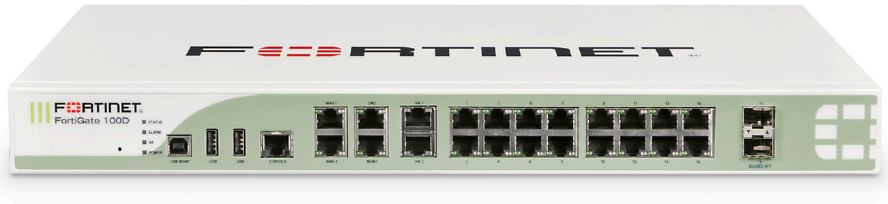


FortiGate® 100D Series

FortiGate 100D, 140D and 140D-POE



The Fortinet Enterprise Firewall Solution delivers end-to-end network security with one platform, one network security operating system and unified policy management with a single pane of glass — for **the industry's best protection against the most advanced security threats and targeted attacks.**



Security Fabric Integration

FortiGate appliances, interconnected with the Fortinet Security Fabric, form the backbone of the Fortinet Enterprise Solution.



Deployment Modes

Distributed Enterprise Firewall
Next Generation Firewall



Hardware Acceleration

SPU CP8



2.5 Gbps
Firewall

2 Million
Concurrent Sessions



310 Mbps
IPS



220 Mbps
NGFW



200 Mbps
Threat Protection



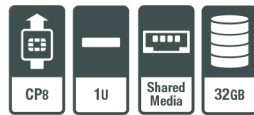
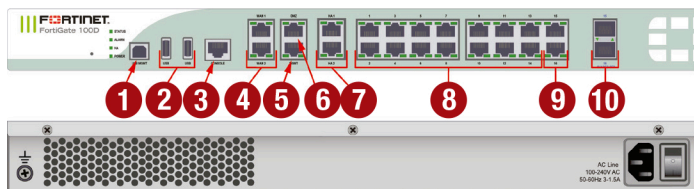
Multiple GE RJ45, GE SFP Slots | PoE Variants

Third-Party Certifications



HARDWARE

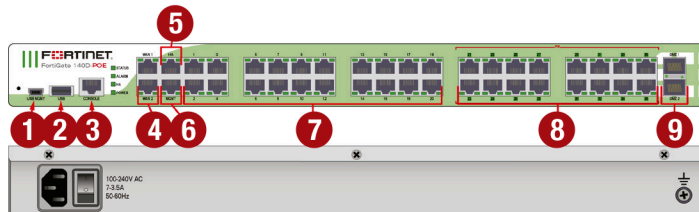
FortiGate 100D



Interfaces

- | | |
|-------------------------------|-----------------------------|
| 1. USB Management Port | 6. 1x GE RJ45 DMZ Port |
| 2. 2x USB Ports | 7. 2x GE RJ45 HA Ports |
| 3. Console Port | 8. 14x GE RJ45 Switch Ports |
| 4. 2x GE RJ45 WAN Ports | 9. 2x GE RJ45 Shared Ports |
| 5. 1x GE RJ45 Management Port | 10. 2x GE SFP Shared Ports |

FortiGate 140D-POE




Interfaces

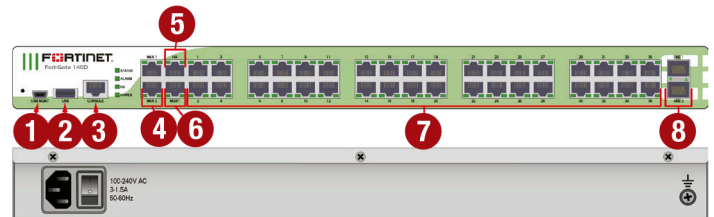
- | | |
|-------------------------|-------------------------------|
| 1. USB Management Port | 6. 1x GE RJ45 Management Port |
| 2. USB Port | 7. 20x GE RJ45 Switch Ports |
| 3. Console Port | 8. 16x GE RJ45 PoE Ports |
| 4. 2x GE RJ45 WAN Ports | 9. 2x GE SFP DMZ Ports |
| 5. 1x GE RJ45 HA Port | |

Powered by SPU CP8

- Providing high-speed cryptography for encryption and decryption
- Accelerates signature-based content inspection services such as AV and IPS



FortiGate 140D



Interfaces

- | | |
|-------------------------|-------------------------------|
| 1. USB Management Port | 5. 1x GE RJ45 HA Port |
| 2. USB Port | 6. 1x GE RJ45 Management Port |
| 3. Console Port | 7. 36x GE RJ45 Switch Ports |
| 4. 2x GE RJ45 WAN Ports | 8. 2x GE SFP DMZ Ports |

Install in Minutes with FortiExplorer

The FortiExplorer™ wizard enables you to easily and quickly set up and configure FortiGate platforms with easy-to-follow instructions. The application runs on Windows, Mac OS X desktops and laptops as well as popular mobile devices. Simply connect to the appropriate USB port on the appliance, and be fully protected in minutes.

Power up with PoE Interfaces

The FortiGate 140D-POE include PoE interfaces that allow you to plug in compatible wireless access points and IP phones out of the box, providing ease of deployment and lower TCO.

SPECIFICATIONS

	FORTIGATE 100D	FORTIGATE 140D	FORTIGATE 140D-POE
Hardware Specifications			
GE RJ45 Ports	20	40	24
GE RJ45 PoE Ports	–	–	16
GE SFP or RJ45 Shared Ports	2	–	–
GE SFP Ports	–	2	2
USB Ports (Client / Server)	1 / 2	1 / 1	1 / 1
T1 Port	–	–	–
Console Port	1	1	1
Internal Storage	32 GB	32 GB	32 GB
Included Transceivers	NA	0	0
System Performance			
Firewall Throughput		2.5 Gbps	
Firewall Latency (64 byte UDP packets)	37 µs	46 µs	46 µs
Firewall Throughput (Packets Per Second)		300 Kpps	
Concurrent Sessions (TCP)		2 Million	
New Sessions/Second (TCP)		22,000	
Firewall Policies		10,000	
IPsec VPN Throughput (512 byte packets)		450 Mbps	
Gateway-to-Gateway IPsec VPN Tunnels		2,000	
Client-to-Gateway IPsec VPN Tunnels		5,000	
SSL-VPN Throughput		300 Mbps	
Concurrent SSL-VPN Users (Recommended Maximum)		300	
IPS Throughput (HTTP / Enterprise Mix) ¹		950 / 310 Mbps	
SSL Inspection Throughput ²		260 Mbps	
Application Control Throughput ³		320 Mbps	
NGFW Throughput ⁴		220 Mbps	
Threat Protection Throughput ⁵		200 Mbps	
CAPWAP Throughput ⁶		1.2 Gbps	
Virtual Domains (Default / Maximum)		10 / 10	
Maximum Number of FortiAPs (Total / Tunnel Mode)		64 / 32	
Maximum Number of FortiTokens		1,000	
Maximum Number of Registered FortiClients		600	
High Availability Configurations		Active / Active, Active / Passive, Clustering	
Dimensions			
Height x Width x Length (inches)	1.75 x 17.01 x 11.73	1.75 x 17.01 x 12.28	1.75 x 17.01 x 12.28
Height x Width x Length (mm)	44 x 432 x 298	44 x 432 x 312	44 x 432 x 312
Form Factor	Rack Mount, 1 RU	Rack Mount, 1 RU	Rack Mount, 1 RU
Weight	9.5 lbs (4.3 kg)	11.5 lbs (5.2 kg)	11.5 lbs (5.2 kg)
Environment			
Power Required		100–240V AC, 50–60 Hz	
Maximum Current	110 V / 3 A, 220 V / 1.5 A	110 V / 2 A, 220 V / 1 A	110 V / 4 A, 220 V / 2 A
Total Available PoE Power Budget*	–	–	270 W
Power Consumption (Average / Maximum)	52.6 W / 63.1 W	44.8 W / 58.7 W	193.4 W / 337.1 W
Heat Dissipation	215.3 BTU/h	200.3 BTU/h	1150.2 BTU/h
Operating / Storage Temperature		32–104°F (0–40°C) / -31–158°F (-35–70°C)	
Operating Altitude		Up to 7,400 ft (2,250 m)	
Humidity		10–90% non-condensing	
Compliance			
		FCC Part 15 Class A, C-Tick, VCCI, CE, UL/cUL, CB	
Certifications			
		ICSA Labs: Firewall, IPsec, IPS, Antivirus, SSL-VPN; USGv6/IPv6	

Note: All performance values are "up to" and vary depending on system configuration. IPsec VPN performance is based on 512 byte UDP packets using AES-256+SHA1. 1. IPS performance is measured using 1 Mbyte HTTP and Enterprise Traffic Mix. 2. SSL Inspection is measured with IPS enabled and HTTP traffic, using TLS v1.2 with AES256-SHA. 3. Application Control performance is measured with 64 Kbytes HTTP traffic. 4. NGFW performance is measured with IPS and Application Control enabled, based on Enterprise Traffic Mix. 5. Threat Protection performance is measured with IPS and Application Control and Malware protection enabled, based on Enterprise Traffic Mix. 6. CAPWAP performance is based on 1444 byte UDP packets.

For complete, up-to-date and detailed feature set, please refer to the Administration Handbook and FortiOS Datasheet.

* Maximum loading on each PoE port is 15.4 W (802.3af).

ORDER INFORMATION

Product	SKU	Description
FortiGate 100D	FG-100D	20x GE RJ45 ports (including 1x DMZ port, 1x Mgmt port, 2x HA ports, 16x internal switch ports), 2x shared media pairs (including 2x GE RJ45, 2x GE SFP slots), 32 GB onboard storage. Maximum managed FortiAPs (Total / Tunnel) 64 / 32.
FortiGate 140D	FG-140D	40x GE RJ45 (including 36x switch ports, 2x Mgmt/HA ports, 2x WAN ports), 2x GE SFP DMZ slots, 32 GB onboard storage. Maximum managed FortiAPs (Total / Tunnel) 64 / 32.
FortiGate 140D-POE	FG-140D-POE	40x GE RJ45 (including 16x PoE ports, 20x switch ports, 2x Mgmt/HA ports, 2x WAN ports), 2x GE SFP DMZ slots, 32 GB onboard storage. Maximum managed FortiAPs (Total / Tunnel) 64 / 32.