



# airVision™

## IP Camera/NVR Management System

Camera Models: airCam, airCam Dome, airCam Mini

NVR Model: airVision-C

**Camera/NVR Management Solution**

**Versatile Camera Settings**

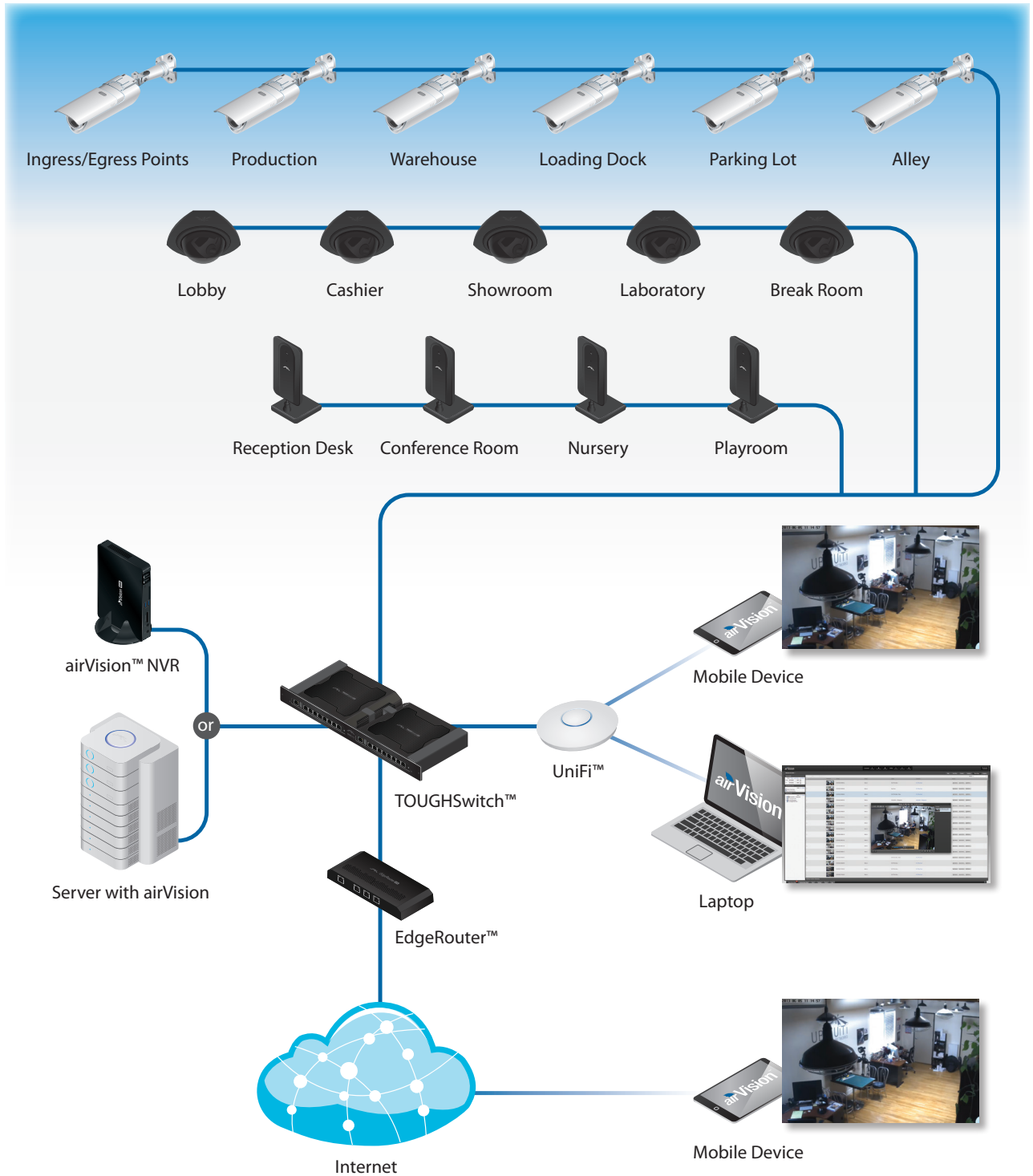
**Detailed Statistical Reporting**

**Advanced Analytics**



# airVision™

## System Example



airCam  
Indoor/Outdoor  
H.264 Video



airCam Dome  
Indoor  
Audio/H.264 Video



airCam Mini  
Indoor  
Audio/H.264 Video

**airVision™**  
IP Camera Management System

# airCam™ Cameras

## Breakthrough Price/ Performance IP Camera Product Line

The airCam line of H.264 megapixel cameras combines advanced industrial design and powerful performance with market-leading cost-effectiveness. There are a variety of cameras available for optimizing application-specific deployments.

### airCam™

- Wall Mount/Ceiling Mount
- 30 FPS
- 1MP/HDTV 720p
- 4.0 mm / F1.5
- Powered through Ethernet

Available in single-pack and 3-pack.



### airCam™ DOME

- Built-in Microphone
- Ceiling Mount
- 30 FPS
- 1MP/HDTV 720p
- 1.96 mm / F2.0
- Powered through Ethernet

Available in single-pack and 3-pack.



### airCam™ MINI

- Wall Mount/Desktop Stand
- Built-in Microphone
- Desktop Mount
- 30 FPS
- 1MP/HDTV 720p
- 3.6 mm / F2.8
- Powered through Ethernet

Available in single-pack.



All models include:

- Power over Ethernet Adapter
- airVision Software Installation CD

# airVision™

## V2.0 Software

### Improved Reliability and Performance

airVision 2.0 has been rebuilt from the ground up to improve reliability and performance. Recordings now use H.264 video instead of Motion JPEG for sharper video with smaller file sizes. airVision 2.0 supports audio recording on cameras with audio capability.

### Features

**Feature Packed User Interface** Accessible from any web browser, airVision's user interface was designed to be easy to use yet packed with advanced features. airVision's user interface is incredibly intuitive and loaded with powerful features such as detailed statistical reporting, multiple views, versatile camera settings, advanced analytics, and customizable event recordings.

**Mobile Support** The airVision web interface is accessible on iOS and Android tablets and phones.

**Easy Deployment** Automatic camera detection and a single setup package for the Controller and NVR make airVision 2.0 easier to install and deploy. airCam settings are now integrated into the airVision software, making it unnecessary to go to the airCam UI to configure camera settings, reboot the camera, or upgrade the firmware.

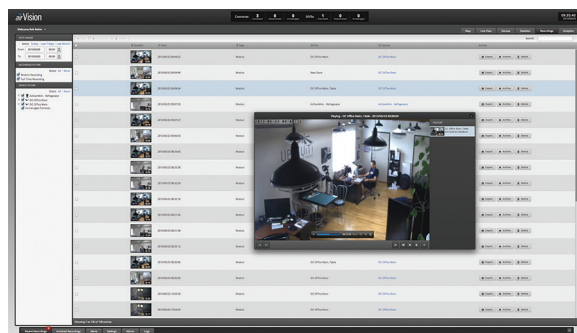
**Camera-Based Motion Detection** The camera now handles motion detection instead of the server, relieving the workload on the server and ensuring that compression and noise won't affect motion detection.

**Additional Live Views** Playlists can be created with a configurable live camera feed rotation. Define the cameras you want included in the playlist and how long you want them to appear on the screen before moving on to the next live feed.

**Disk Management Features** airVision 2.0 has automatic recording management to free up disk space. User-definable disk space and date-based auto purge allow users to keep a set amount of free disk space or automatically delete recordings after a certain number of days. Another storage feature is the ability to map external USB or network storage drives.

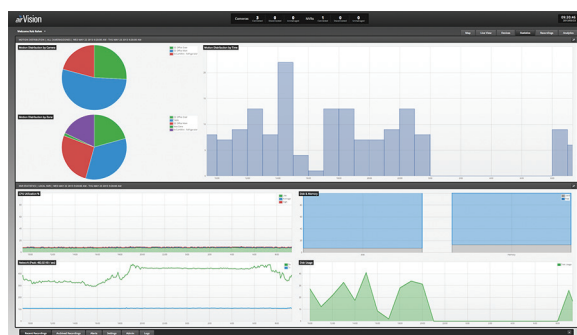
**Cost-Effective Solution** Shattering conventional industry thinking, Ubiquiti offers airVision's powerful IP surveillance software completely free of charge. No huge upfront costs, no monthly subscription fees.

 [www.ubnt.com/airvision](http://www.ubnt.com/airvision)



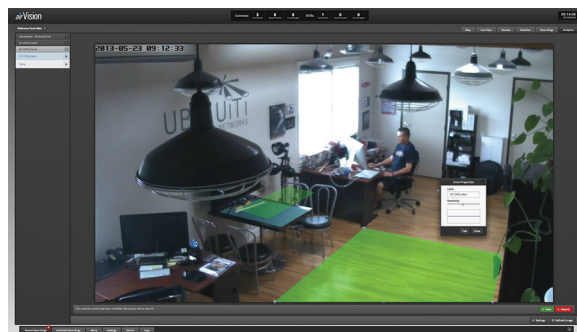
### Event Recordings

airVision gives you a variety of options and settings to customize what your cameras record.



### Detailed Statistical Reporting

Quickly assess important camera activity and NVR performance with easy-to-read graphs.



### Advanced Analytics

Customize your own motion detection zones. You can place several zones and set their alarm sensitivities as high or low as the situation demands.



## Hardware

### Dedicated Hardware NVR with airVision pre-installed

The airVision NVR is a plug-and-play NVR appliance with low power consumption. The airVision software is pre-installed for quick and easy installation. No additional software is required. Plug it into the network, go through the configuration wizard, and it is set up and ready to go.

The airVision NVR has a built-in 500 GB hard drive. This equates to approximately 1200 recording hours @ 480p resolution or 400 recording hours at 720p resolution (these can vary depending on the frame rate).



## Specifications

NVR Specifications	
Dimensions	135 x 190 x 25 mm
Weight	483 g
Processor	Intel D2550
Memory	4 GB
Hard Drive Capacity	500 GB
Ports	(1) 10/100/1000 Ethernet
Power Supply	65 W, 19V, 3.42A
Certifications	CE, IC

airVision Specifications	
Software	Browser-Based Interface, Tablets and Smartphones Supported
System Setup	Plug-and-Play Installation, Automatic Camera Detection
Camera Support	Recommended for up to 20 Ubiquiti airCams. Supports up to 50.
Supported Devices	Operating Systems: Windows, Apple, and Linux Browsers: Chrome, Internet Explorer 10, Firefox, and Safari Smartphones: iPhone and Android
Media Format	MP4 (H.264/AAC)
Scheduling	Day/Time/Camera Scheduled Video Recording/Motion Detection/Email Alerts
Views	Custom Views of Multiple Cameras Full Screen Capability





## Specifications

airCam Specifications	
Dimensions	158 x 61.5 x 58.5 mm (without mounting arm) 264 x 61.5 x 58.5 mm (with mounting arm)
Weight	240 g (196 g without mounting arm)
Ports	(1) 10/100 Ethernet
Sensor	Progressive Scan RGB CMOS ¼"
Lens	4.0 mm/ F1.5
Power LED	Orange
Link/Activity LED	Green
Buttons	Factory Reset Button
Power Method	Passive Power over Ethernet (12-24V)
Power Supply	24V, 0.5A PoE Adapter included
Maximum Power Consumption	2.4 W
Certifications	CE, FCC, IC
Mounting	Wall/Ceiling Adapter Kit Included
Operating Temperature	-40 to 70° C
Operating Humidity	20 - 80% Noncondensing

Video	
Video Compression	H.264
Resolution	1MP/HDTV 720p
Maximum Frame Rate	30 FPS
Image Setting	Brightness, Contrast, Sharpness, Saturation, Noise Reduction, 50 Hz/60 Hz

General	
Processor	ARM-Based 32-Bit RISC
Memory	128 MB DDR2 SDRAM, 8 MB Flash
Connector	RJ-45 10BASE-T/100BASE-TX PoE
Maximum Active Array Size	1280 x 800
View Angle	47° (H) 31° (V) 54° (D)

Network	
Security	Multiple User Access Levels with Password Protection, User Access Log



## Specifications

airCam Dome Specifications	
Dimensions	100 x 94 mm (length x diameter)
Weight	184 g
Ports	(1) 10/100 Ethernet, MicroSD Card Slot
Sensor	Progressive Scan RGB CMOS 1/4"
Lens	1.96 mm/F2.0
Power LED	Orange
Link/Activity LED	Green
Buttons	Factory Reset Button
Power Method	Passive Power over Ethernet (12-24V)
Power Supply	24V, 0.5A PoE Adapter Included
Maximum Power Consumption	3.5 W
Certifications	CE, FCC, IC
Mounting	Ceiling Mount
Operating Temperature	0 to 40° C
Operating Humidity	20 - 80% Noncondensing

Video	
Video Compression	H.264
Resolution	1MP/HDTV 720p
Maximum Frame Rate	30 FPS
Image Setting	Brightness, Contrast, Sharpness, Saturation, Mirror, Flip, Noise Reduction, 50 Hz/60 Hz

Audio	
Built-In Microphone	ECM (Omni.); Sensitivity = -42 ± 3 dB; S/N = 60 dBA

General	
Processor	ARM-Based 32-bit RISC
Memory	128 MB DDR2 SDRAM, 8 MB Flash
Local Storage	MicroSD Card Slot (card not included)
Maximum Active Array Size	1280 x 800
View Angle	90° (H) 62° (V) 101° (D)

Network	
Security	Multiple User Access Levels with Password Protection, User Access Log



## Specifications

airCam Mini Specifications	
Dimensions	55 x 55 x 125 mm
Weight	166 g
Ports	(1) 10/100 Ethernet, MicroSD card slot
Sensor	Progressive Scan RGB CMOS 1/4"
Lens	3.6 mm/ F2.8
Networking Interface	(1) 10/100 Ethernet Port
Power LED	Orange
Link/Activity LED	Green
Buttons	Factory Reset Button
Power Method	Passive Power over Ethernet (12-24V)
Power Supply	24V, 0.5A PoE Adapter Included
Maximum Power Consumption	3 W
Certifications	CE, FCC, IC
Mounting	Wall Mount/Desk Mount
Operating Temperature	0 to 40° C
Operating Humidity	20 - 80% Noncondensing

Video	
Video Compression	H.264
Resolution	1MP/HDTV 720p
Maximum Frame Rate	30 FPS
Image Setting	Brightness, Contrast, Sharpness, Saturation, Mirror, Flip, Noise Reduction, 50 Hz/60 Hz

Audio	
Microphone	ECM (Omni.); Sensitivity = -42 ± 3 dB; S/N = 60 dBA

General	
Processor	ARM-Based 32-bit RISC
Memory	128 MB DDR2 SDRAM, 8 MB Flash
Local Storage	MicroSD Card Slot (Card not included)
Maximum Active Array Size	1280 x 800
View Angle	52° (H) 34° (V) 59° (D)

Network	
Security	Multiple User Access Levels with Password Protection, User Access Log



# TOUGH Cable™

## OUTDOOR CARRIER CLASS SHIELDED

Protect your networks from the most brutal environments with Ubiquiti Networks' industrial-grade, shielded Ethernet cable, TOUGH Cable.

### Increase Performance

Dramatically improve your Ethernet link states, speeds, and overall performance with Ubiquiti TOUGH Cable.

### Extreme Weatherproof

Designed for outdoor use, TOUGH Cable has been built to perform even in the harshest weather and environments.

### ESD Damage Protection

Protect your networks from devastating electrostatic discharge (ESD) attacks.

### Extended Cable Support

TOUGH Cable has been developed to increase power handling performance for extended cable run lengths.



## TOUGH Cable Connectors

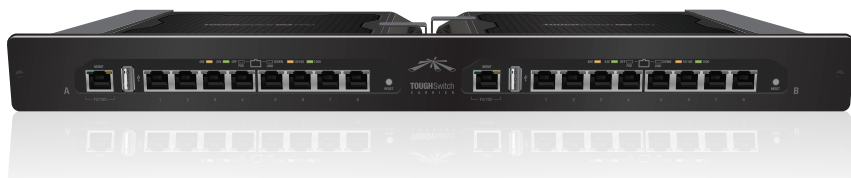
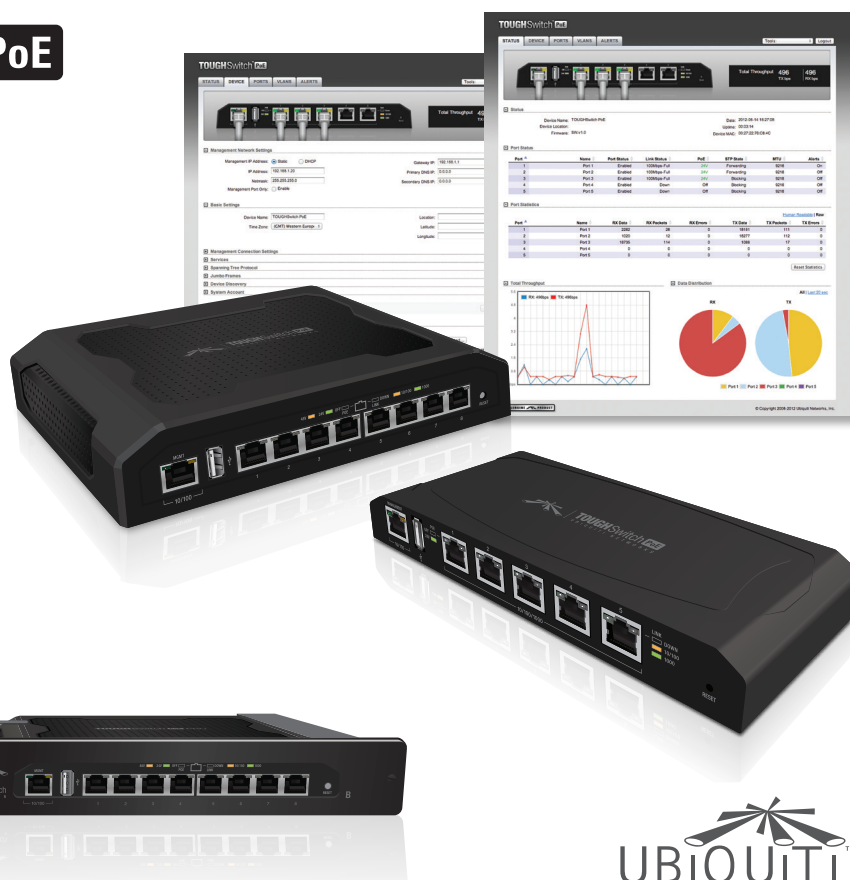
Specifically designed for use with Ubiquiti TOUGH Cable, TOUGH Cable Connectors protect against ESD attacks and Ethernet hardware damage, while allowing rapid field deployment without soldering. The standard TOUGH Cable Connectors are available in a box of 100, while the TC-GND versions include ground wires and are available in a box of 20.

# TOUGH Switch™ PoE

## Advanced Gigabit PoE Managed Switch

Introducing the Advanced Power over Ethernet Controllers, TOUGH Switch™ PoE from Ubiquiti Networks. TOUGH Switch PoE delivers reliable passive PoE and fast 10/100/1000 Mbps connectivity to attached Ubiquiti devices and other devices that support passive PoE.

To connect your PoE devices, simply enable PoE in the easy-to-use TOUGH Switch Configuration Interface. Each port can be individually configured to provide PoE, so both PoE and non-PoE devices can be connected.



All specifications in this document are subject to change without notice.

© 2013 Ubiquiti Networks, Inc. All rights reserved.

UBIQUITI  
NETWORKS

www.ubnt.com

RRJL061713

Datasheet

airVision™