

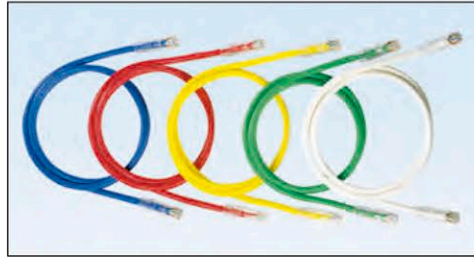
# NetKey® Category 6A UTP Patch Cords

# PANDUIT®

DATA SHEET

## specifications

Category 6A/Class EA F/UTP patch cords shall be constructed of 26 AWG shielded twisted pair stranded copper cable with a UTP modular plug on each end. Patch cord cable shall be offered in multiple colored F/UTP cable for design flexibility with a strain relief boot on each modular plug. All patch cords shall be compatible with both T568A and T568B wiring schemes.



## technical information

<b>Category 6A/Class EA channel performance:</b>	Certified channel performance in a 4-connector configuration up to 100 meters and meets the requirements of ANSI/TIA-568-C.2 Category 6A and ISO 11801 Class EA standards for supporting 10GBASE-T transmission over twisted-pair cabling
<b>Cable diameter:</b>	0.252 in. (6.3mm) nominal
<b>FCC and ANSI compliance:</b>	Meets all applicable ANSI/TIA-968-A requirements; contacts plated with 50 microinches of gold for superior performance
<b>RoHS compliance:</b>	Compliant
<b>IES compliance:</b>	Meets IEC 60603-7
<b>PoE compliance:</b>	Meets requirements of IEEE 802.3af and IEEE 802.3at for PoE applications
<b>UL rated:</b>	UL 1863 approved
<b>Flammability rating:</b>	CM/LSZH dual rated

## key features and benefits

<b>100% performance tested for wiremap, NEXT, and return loss</b>	Confidence that each patch cord delivers specified performance
<b>Integral pair manager</b>	Optimizes performance and consistency by reducing untwist at plug
<b>Patented tangle-free latch</b>	Prevents snags and provides easy release, saving time on frequent moves, adds, and changes
<b>Slender strain relief boot</b>	Provides easy access in high-density applications
<b>Identification</b>	Provides identification of performance level, length, and quality control number for future traceability

## applications

The NetKey® Category 6A UTP Patch Cords are a component of the NetKey® Category 6A Copper Cabling System. Interoperable and backward compatible, this end-to-end system provides design flexibility to protect network investments well into the future.

Key applications include:

- 10GBASE-T Ethernet
- Wireless deployment
- Power over Ethernet
- Video streaming

### NetKey® Category 6A UTP Patch Cords

**Foot lengths:** NK6APC3\*

**Meter lengths:** NK6APC1M\*\*

### NetKey® Category 6A Jack Module

**Punchdown Module:** NK6X88M\*\*

\*For standard lengths other than 3 feet (5, 7, 10, 14, 20, 25, 30, 40, or 50) change the length designation in part number to the desired length. For standard cable colors other than Off White, add suffix BL (Black), BU (Blue), RD (Red), YL (Yellow), GR (Green), or GY (Gray) at the end of the part number. For example, the part number for a blue 5 foot patch cord is NK6APC5BU.

\*\*For standard lengths other than 1 meter (2, 3, 4, 5, 7, 10, 12, or 15) change the length designation in part number to the desired length. For standard cable colors other than Off White, add suffix BL (Black), BU (Blue), RD (Red), YL (Yellow), GR (Green), or GY (Gray) at the end of the part number. For example, the part number for a blue 5 meter patch cord is NK6APC5MBU.

^To designate a color, add suffix IW (Off White), EI (Electric Ivory), IG (Int'l Gray), WH (White), BL (Black), OR (Orange), RD (Red), BU (Blue), GR (Green), or YL (Yellow).

# NetKey® Category 6A UTP Patch Cords

